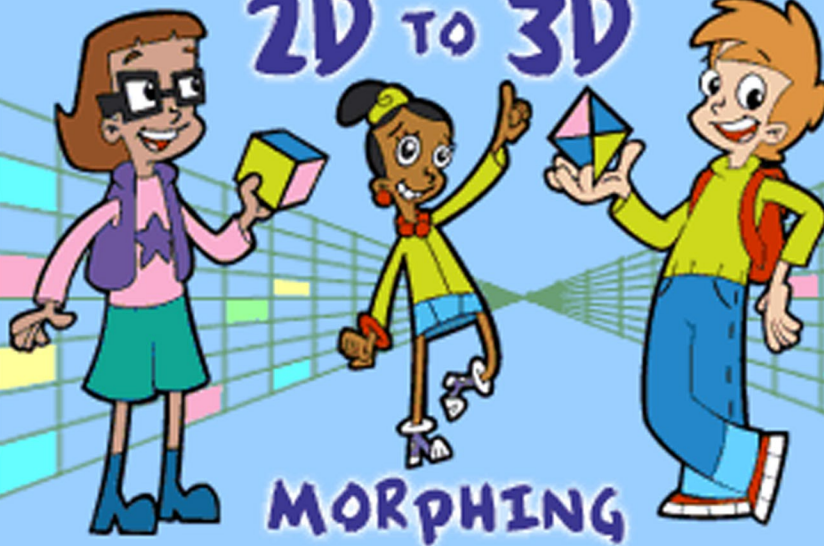


# 2D TO 3D



FLAT 2D SHAPES "RISE UP"  
TO MAKE 3D FORMS

## DIRECTIONS:

### YOU WILL NEED:

- Paper or construction paper
- Scissors
- Glue and/or tape

### STEPS:

1. Print the pattern.
2. Cut out the shape along the solid lines.
3. Fold all the dotted lines.
4. Bring the shape together.
5. Glue or tape the tabs.
6. Now you've morphed a 2D shape into a 3D form!

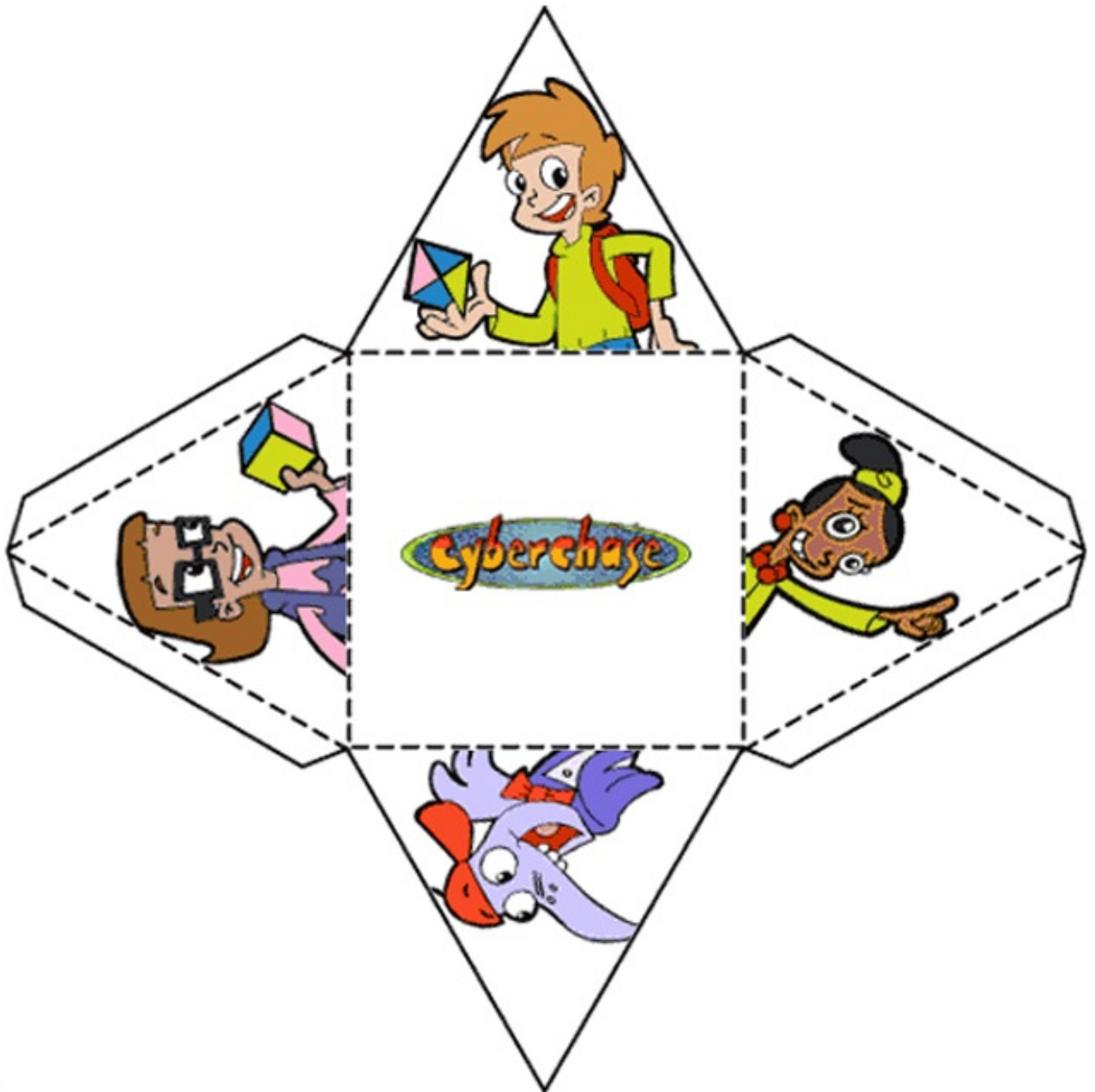




2D TO 3D



Cyberchase



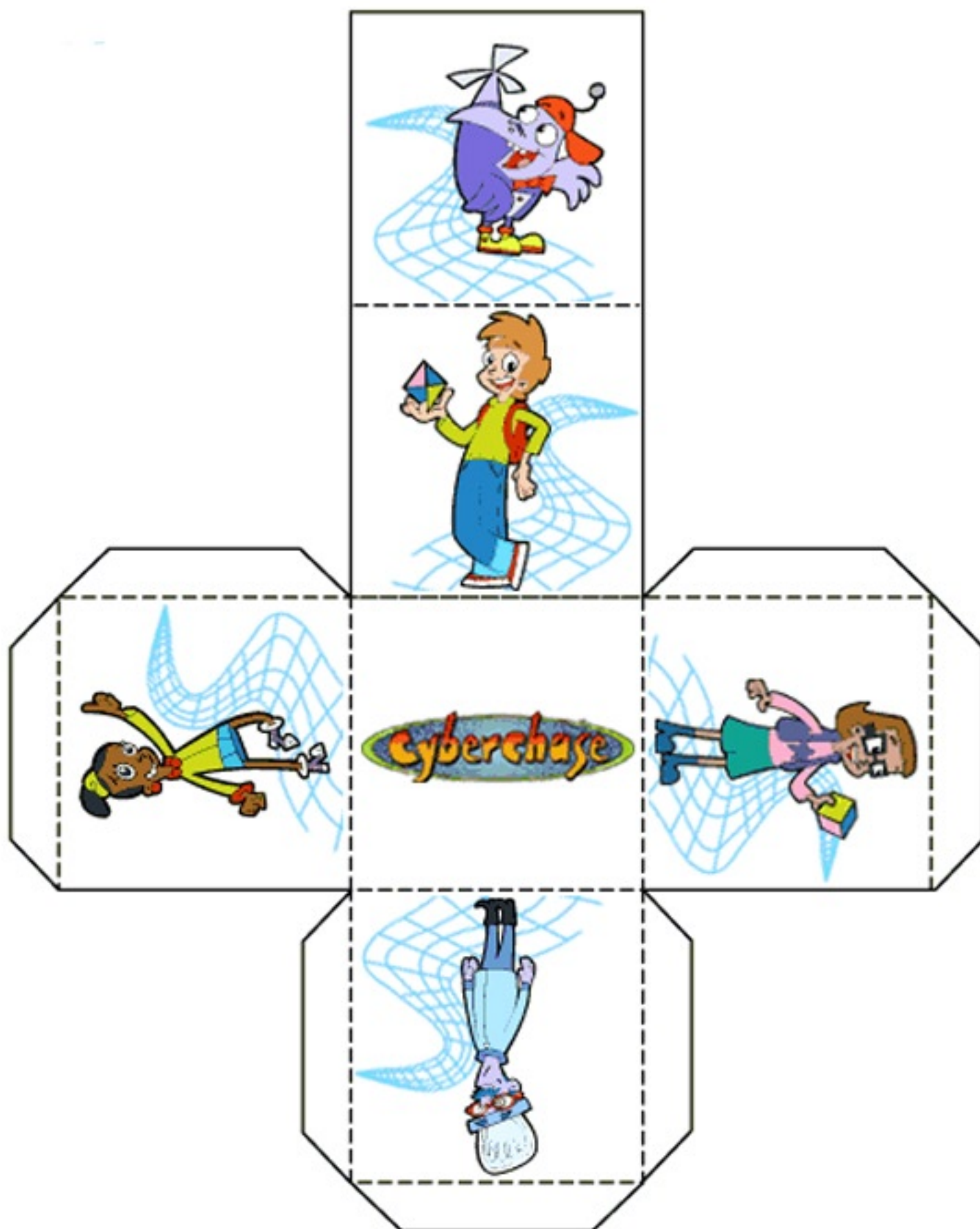


Cyberchase

2D TO 3D



CUBE





Cyberchase

2D TO 3D



OCTAHEDRON

